



www.juold.com

Juo Ltd
Studio Unit 4
National Glass Centre
Liberty Way
Sunderland
SR6 0GL
Tel: 0191 515 5509
Jo: 07866 086 898
Jess: 07950 627 264

Registered in England &
Wales No. 05880597

Keep in Touch

As always, please do keep in touch and let us know what you think of our newsletter, hope you're all well,

*Best wishes from
Jess & Jo!*



Above: Coast, triptych, RRP £520,
60 x 15cm. Jessamy Kelly

Our Spring 2010 News

Welcome to our Ninth quarterly newsletter. We have been busy launching our Spring – Summer 2010 ranges and preparing for our spring events; which we've pulled together for you to have a look at! There's information on our recent & future events that are coming up!

Accounts

Our existing accounts are currently stocking some of the new 2010 ranges!

- Pyramid Gallery, Chester
 - Westgate gallery, North Berwick
 - Treeby & Bolton, Keswick
 - CS Bedford in Ruislip, Surrey
 - Union Interiors, Grantham
 - National Glass Centre, Sunderland
 - Teign Valley Glass, Plymouth
 - Artifex Contemporary Arts, West Midlands
 - The Biscuit Factory, Newcastle
 - Design Mob, Middlesbrough
- For further details on our stockists please contact us directly.

Website

We have updated the website recently with our new catalogue so please do have a look for yourself to see our new ranges at www.juold.com You can also find our work available to buy on line at the following e-stockists:

www.jazzitupinteriors.co.uk
www.thewhitelounge.co.uk
www.xclusivetreats.co.uk
www.evokeshop.com
www.commissioncraftsman.com
www.cohesionglassnetwork.org
www.designsbyseed.co.uk
www.designmob.co.uk

New Website Stockist:

Designmob is a new website set up by recent design graduate Olivia Monaghan, She features the work of north east artists on her new website, check it out to see some of the best local art and design talent, including some of our work! www.designmob.co.uk.



Above: Sparks, 60 x 30cm, RRP £250

Below: Jessamy & Joanne with 'Wearside Migration'



Listings:

Dates for you diaries...

Affordable Art Fair, London

Juo showcased their work at the AAF, in Battersea this year with Café Jello. The fair will run from the 11th to the 15th of March. Juo launched some of their new ranges there as well as showcasing some of their bestsellers. Joanne was also showing her blown and cast work on the Cohesion Glass Network Stand.



Left: Horizon London, wall panel £250 60 x 30cm

'Summer Collection' SDC Gallery, London

Jessamy will be showcasing some of her new cast and blown work at the SDC Gallery in London. The show will run from April onwards. www.sdcgallery.org



Above: Spliced, RRP £1800 cast glass, Jessamy Kelly 'Cutting Light'

Queens Gallery, Dundee

Jessamy has a solo showcase at the Queens Gallery in Dundee; the show will feature some of her recent work created whilst on her residency at Edinburgh College of Art. The show will run from the 29th of May - 19th of June. www.queensgallery.co.uk

Above: Spliced, RRP £1800, JK

Commissions

UKTI, GNR, DNN & ESF New Projects

Juo are currently working on a commission with UK Trade and Investment to design and make a series of awards for the North East Exporters Awards 2010. The brief is to design a unique, creative artwork which could be presented as an award. They are also working on a range of commissions with the Great North Run, Design Network North and the Emmanuelle Schools Foundation.

NHS, Fused glass screen

Juo recently finished a large scale commission for the NHS, at the New Croft Sexual Health clinic, in Newcastle. The brief was to design and make a free standing fused glass wall that created different areas within the waiting room.



Above: NHS Screen, New Croft Centre, Newcastle Upon Tyne

Newcastle Building Society

Juo are due to install a commission at a new branch of the Newcastle Building Society, the Northumberland Street branch will officially open on the 23rd of March. They have designed a commemorative plaque to mark the occasion.

Museummaker

Jessamy has been selected to design a range of products for the Woodhorn Museum, in Northumberland. The range will be launched in July 2010 and will also go on to feature in London Design Week. Museummaker is part of a national campaign to link designer-makers with museums. www.museummaker.com

Seascape Gallery

Jessamy will be showcasing some of her blown and cast art glass at the Seascape Gallery, in Goldaming. www.seascapegallery.co.uk

Black and Gold @ the Platform Gallery

Joanne is currently taking part in this exhibition of all things black or gold at the Platform Gallery, Clitheroe. The aim of "Black and Gold" is to showcase contemporary approaches to art and demonstrate how boundaries are pushed within chosen material highlighting attention to detail. 16th Jan - 6th March.

Right: Black Breeze Bowls, Joanne Mitchell



Above: Soot Storm Drawing by Jessamy Kelly for Woodhorn Museum



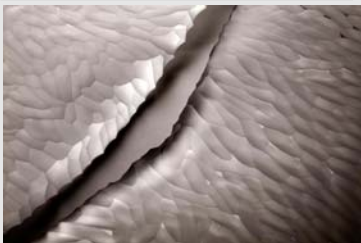


Above: *Oblique, Turquoise,*

Pairings', Manchester Metropolitan University

Jessamy and ceramicist Steve Dixon have been working on a collaborative project; linked to the Manchester Metropolitan University's Pairings scheme. Their work will be featured alongside other designer-makers work in this wide ranging exhibition of contemporary craft. The show will run from the 26th of July until the 12th of November and will then be touring throughout the UK.

Below: *Wings, Detail, Jessamy Kelly RRP £990*



'Migrate: 30 Years of Scottish Glass'

Jessamy still has some work in the Migrate Exhibition; which will run until the end of March at the Broadfield House Glass Museum, in the West Midlands. www.scottishglassociety.com



Above: *Wedge, RRP £2200, cast glass, Jessamy Kelly*

20:10 at The Ruthin Craft Centre

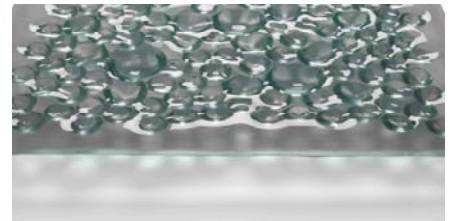
Work by Joanne will be part of the 20:10 exhibition at the Ruthin Craft Centre, opening on 15th March 2010. The exhibition is showing the work of 20 selected makers who have come to prominence over the last decade. www.ruthincraftcentre.org.uk



Above: *'Horizon' Edinburgh skyline, RRP £460 100x30cm*

Future Plans

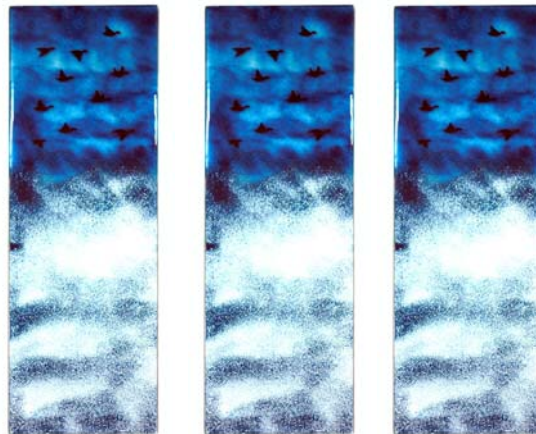
Always thinking ahead we are getting ready for our upcoming showcases, including 'Blast! 2010' and the Newcastle Gateshead Art Fair; for which we are designing some exclusive pieces....



Edinburgh College of Art

Jessamy is enjoying her Residency at ECA for a year; working alongside the students has been a great experience for her. She will be creating a new series of cast glass artworks. www.eca.ac.uk

Above: *Aqua Detail, clear*



Above: *'Migration' Turquoise RRP £390 Triptych 60 x 15cm*

Water Jet at the University of Sunderland

Joanne is having fun getting to grips with the University of Sunderland's water jet equipment. Innovative designs can be precision cut in glass using a mix of fine grit and water; Joanne is investigating this technique as part of her new PhD study.

Princes Trust

It was an honour for Jess & Jo to be invited by Tracy Richardson of the Princes Trust to be Enterprise Ambassadors. Jo & Jess have been busy giving talks about how they set up Juo and tips they have for running your own business. They have been working with young adults and school children in the NE region.

Shipley Art Gallery Talk

Jessamy will be giving a talk about her work on the 25th of March at the Shipley Art Gallery, Gateshead; from 7pm. www.twmuseums.org.uk/shipley/



Above: *Glacier detail, Joanne Mitchell*